

WOOD LOOK

Treverklouk

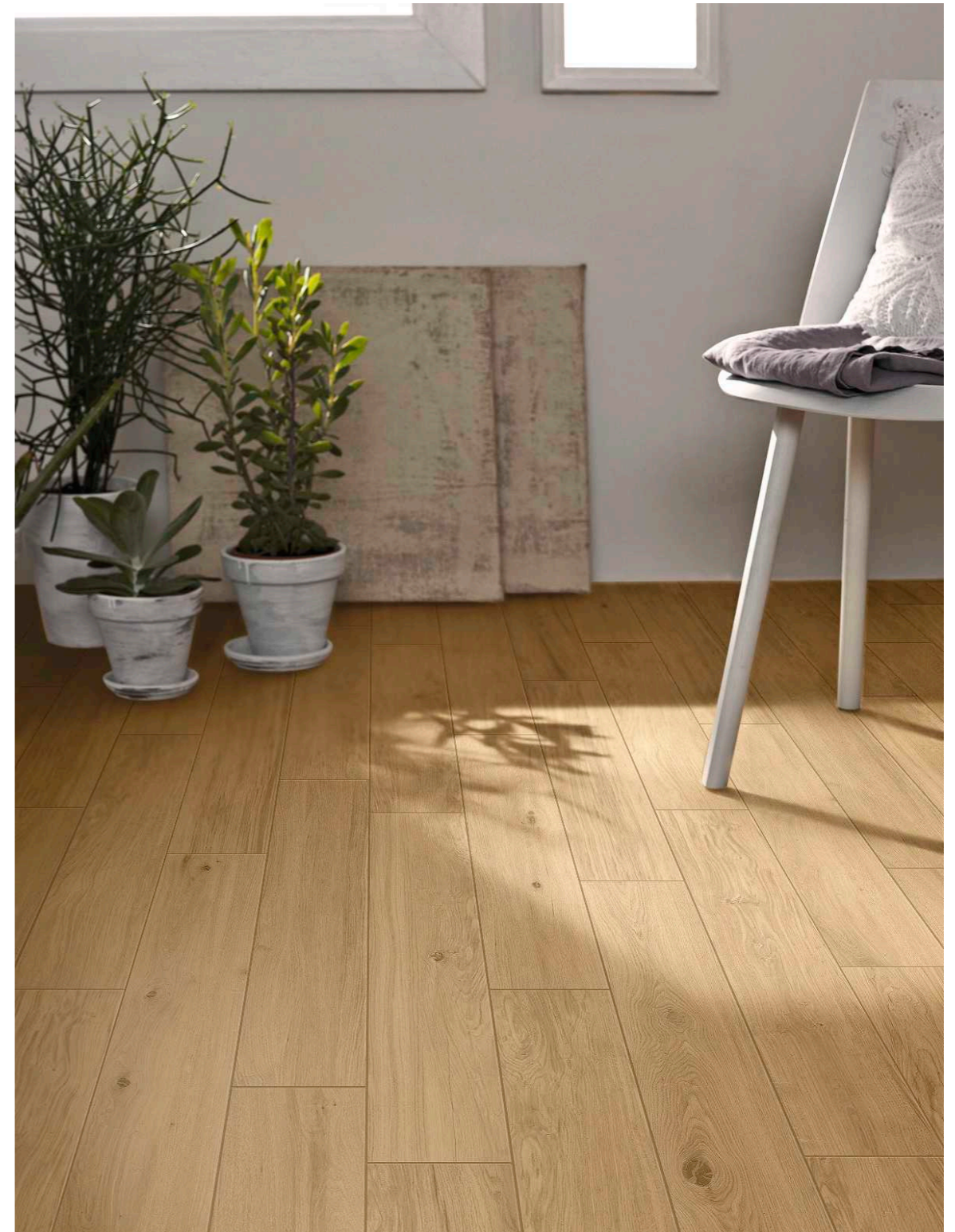


MARAZZI



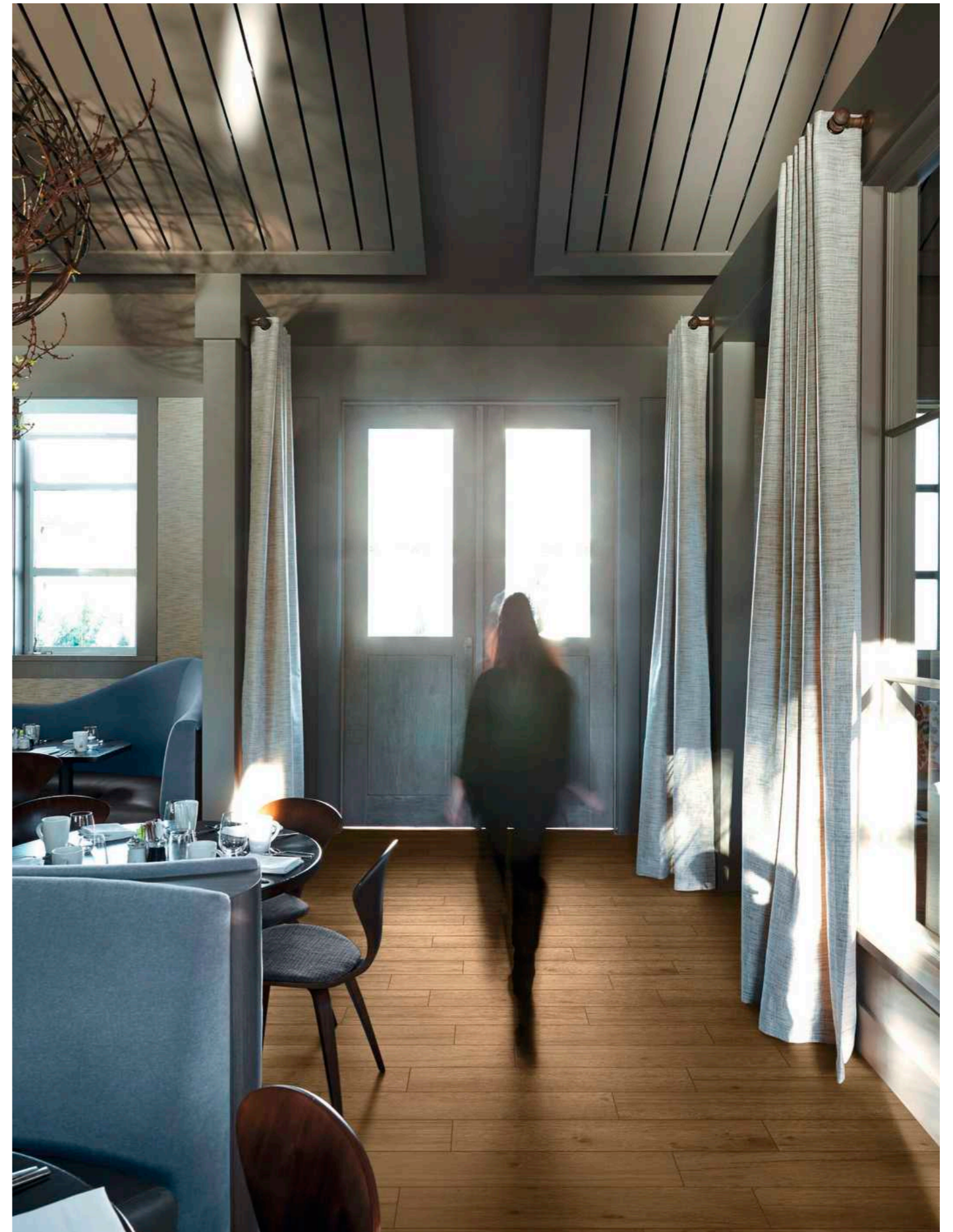
Treverklook

A faithful porcelain stoneware interpretation of oak to offer maximum versatility of use in the design of environments that reveal their unique experience, through combinations of original and casual forms and surfaces. Treverklook consists of 5 natural colours in the rectified 14.5x90 cm size.





M5SK Treverklook White Rt 14x90cm



M5SH Treverklook Walnut Rt 14x90cm





Treverklook Index

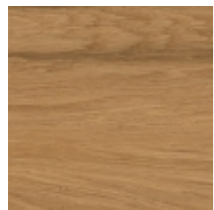
Treverklook

- Porcelain Stoneware



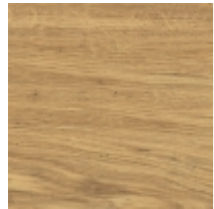
Beige

Formato	Superfici	Codice	Descrizione	Spessore	Rett.	Caratteristiche tecniche	Utilizzo	Premium Tech	R	BCR	Pendulum Class	Pend. PTV >36	Australian pendulum	DCOF	Destinazioni d'uso	V	Pezzi per scatola	Mq	Kg	Scatole per pallet	Mq	Kg
14,5x90cm	Natural	M5SL	Treverklook Beige Rt	MM 08	.	Frost proof, Resistance deep abrasion	Floor & Wall		R9	> 0.40	Class 1				H	V3	8	1,04	18,55	48	50,11	890,41



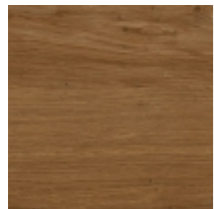
Cherry

Formato	Superfici	Codice	Descrizione	Spessore	Rett.	Caratteristiche tecniche	Utilizzo	Premium Tech	R	BCR	Pendulum Class	Pend. PTV >36	Australian pendulum	DCOF	Destinazioni d'uso	V	Pezzi per scatola	Mq	Kg	Scatole per pallet	Mq	Kg
14,5x90cm	Natural	M5SF	Treverklook Cherry Rt	MM 08	.	Frost proof, Resistance deep abrasion	Floor & Wall		R9	> 0.40	Class 1				H	V3	8	1,04	19,00	48	50,11	911,96



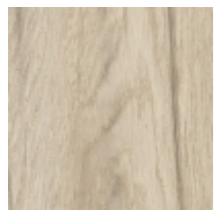
Honey

Formato	Superfici	Codice	Descrizione	Spessore	Rett.	Caratteristiche tecniche	Utilizzo	Premium Tech	R	BCR	Pendulum Class	Pend. PTV >36	Australian pendulum	DCOF	Destinazioni d'uso	V	Pezzi per scatola	Mq	Kg	Scatole per pallet	Mq	Kg
14,5x90cm	Natural	M5SD	Treverklook Honey Rt	MM 08	.	Frost proof, Resistance deep abrasion	Floor & Wall		R9	> 0.40	Class 1				H	V3	8	1,04	19,16	48	50,11	919,66



Walnut

Formato	Superfici	Codice	Descrizione	Spessore	Rett.	Caratteristiche tecniche	Utilizzo	Premium Tech	R	BCR	Pendulum Class	Pend. PTV >36	Australian pendulum	DCOF	Destinazioni d'uso	V	Pezzi per scatola	Mq	Kg	Scatole per pallet	Mq	Kg
14,5x90cm	Natural	M5SH	Treverklook Walnut Rt	MM 08	.	Frost proof, Resistance deep abrasion	Floor & Wall		R9	> 0.40	Class 1				H	V3	8	1,04	18,95	48	50,11	909,47



White

Formato	Superfici	Codice	Descrizione	Spessore	Rett.	Caratteristiche tecniche	Utilizzo	Premium Tech	R	BCR	Pendulum Class	Pend. PTV >36	Australian pendulum	DCOF	Destinazioni d'uso	V	Pezzi per scatola	Mq	Kg	Scatole per pallet	Mq	Kg
14,5x90cm	Natural	M5SK	Treverklook White Rt	MM 08	.	Frost proof, Resistance deep abrasion	Floor & Wall		R9	> 0.40	Class 1				H	V3	8	1,04	19,01	48	50,11	912,62

Legenda

Destinazioni d'uso

D
Tiles suitable only for residential bathrooms and bedrooms; any type of abrasion must be avoided.

E
Tiles suitable for any room of a house except for entrance areas and kitchens. Low stress abrasive wear.

F
Tiles suitable for any room of a house without direct access from the outside or access not protected by doormats. Average stress abrasive wear.

G
Materials suitable for rooms subject to medium-heavy abrasion, such as detached houses and light-traffic commercial buildings.

H
Materials suitable for situations of relatively hard abrasion in environments without protection against scratching, both public and private.

Variazioni cromatiche

V0
Monochromatic - V0: tiles of the same shade are very uniform, in just one colour

V1
Uniform appearance - V1: uniform colour with only minimal differences between tiles in the same production run

V2
Slight variation - V2: clearly distinguishable differences in texture and pattern within the same production run

V3
Moderate variation - V3: significant variation in texture, pattern and colour from tile to tile within the same production run. The colour range should be viewed before selecting the material

V4
Substantial/random variation - V4: random differences from tile to tile. One tile may have totally different texture and colour from another. The colour range should be viewed before selecting the material

Certificazioni



ISO 14001



Greenguard Certification



CE 001MRZI



ISO 9001



LEED Credits



CE 009MRZI



Green Building Council



FDES



UKCA 001MRZUK



GPP



Declare



UKCA 009MRZUK



EPD Italy



HPD



SASO



ISO 17889-1



CAM Sassuolo

© Copyright by Marazzi Group S.r.l., 2023.
All rights reserved, Marazzi Group Srl a Socio Unico
Viale Regina Pacis, 39 41049 Sassuolo (MO) Italy
T +39 0536 860800 F +39 0536 860644
info@marazzi.it www.marazzi.it

La riproduzione dei colori è approssimativa. Le tabelle con i dati riferiti ai contenuti per scatole ed ai pesi degli imballi sono aggiornate al momento della stampa del catalogo, pertanto i dati elencati possono subire variazioni.

Marazzi Group ha la facoltà esclusiva di modificare e sostituire, anche solo parzialmente i componenti dei sistemi illustrati in questo folder, senza l'obbligo di darne preavviso.



MARAZZI